



*Solution*

# Océ PRISMAproduction V5.0

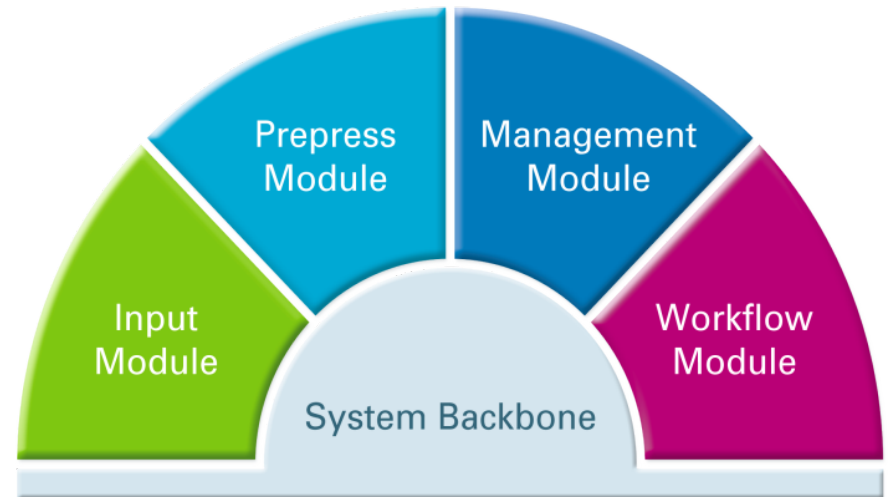
Buddy Mountcastle

*Press Go! Customer Exclusive Early Announcement*

**Canon**  
CANON SOLUTIONS AMERICA

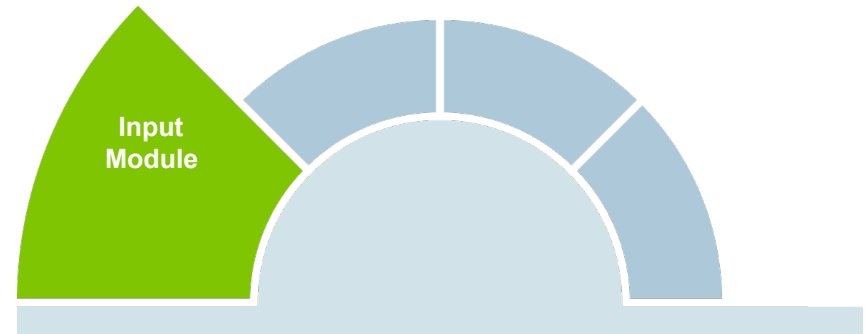
# Océ PRISMAproduction – We are workflow

- Drive any production printers with unlimited performance
- Perform and automate pre-press and spooling tasks
- Define highly effective workflows to automate all your production processes
- Control you production across multiple sites
- Enjoy high-level production reliability



# Océ PRISMAproduction – Input Module

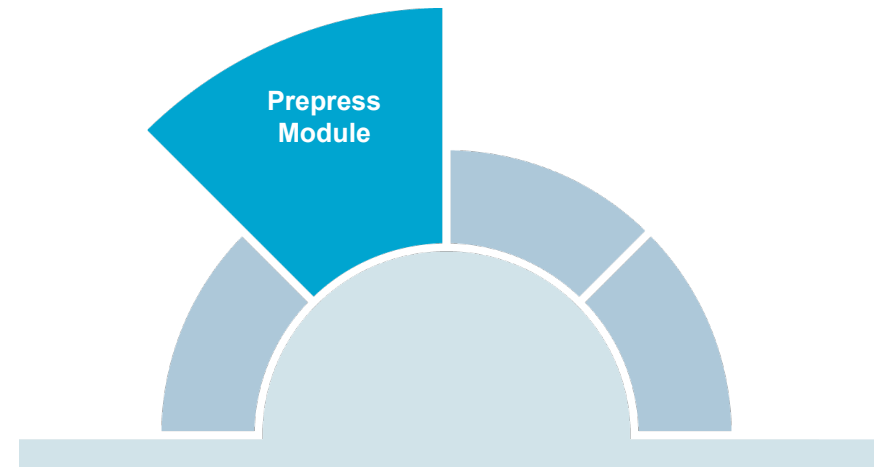
- Define automated input workflow
- Input any kind of data stream: AFP, PDF, LCDS, PCL, PS, PPML, ...
- Intelligent hot folders
- Get data from mainframe
- JDF/JMF connectivity
- Intelligent book printing solutions



The flexible **Input Module** enables you to process different datastreams from host, ERP or any other sources in **one** workflow production system.

# Océ PRISMAproduction – Prepress Module

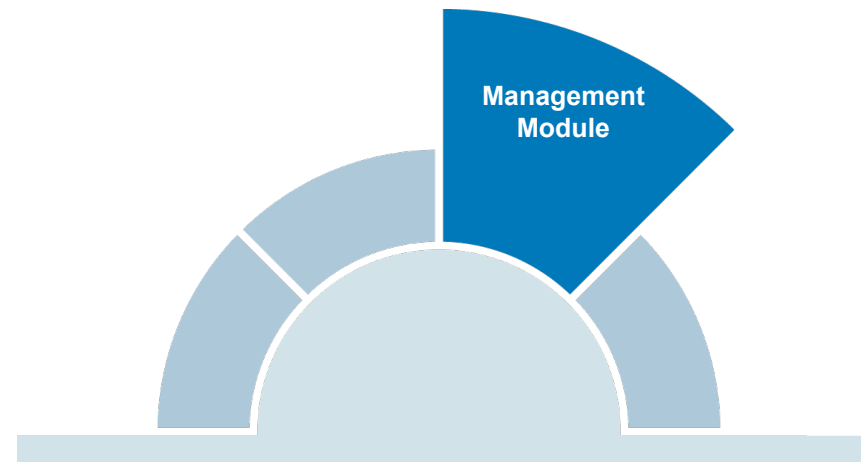
- Industry unique AFP pre-flighting
- PDF pre-flighting and reporting
- Application enrichment with indexing and sorting
- Smart white paper solutions
- Professional impositioning for publishing environments



With the **Prepress Module**, you can optimize print files for best performance and best color quality through fully automated and integrated functionalities.

# Océ PRISMAproduction – Management Module

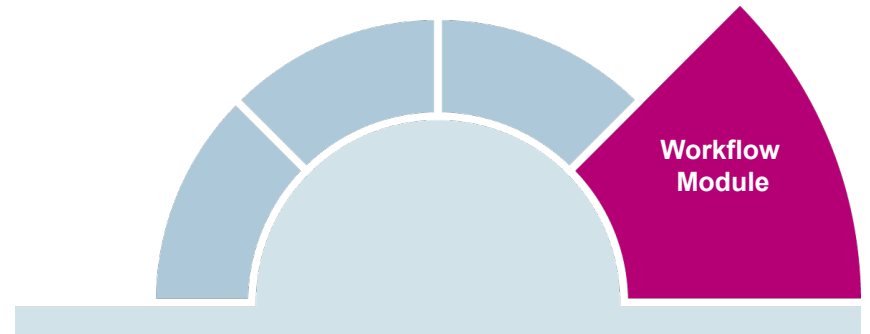
- Drive any production printers with unlimited performance
- Output into electronic formats (PDF)
- Fully automated spool management including reprints, load balancing and error recovery
- Solutions for ink estimation
- Graphical floor plan



With the **Management Module** you can drive all their production devices with **one** production management system. This ensures productivity and allows service level management and monitoring.

# Océ PRISMAproduction – Workflow Module

- Define smart workflows for full automation
- Intelligent automation of all processes related to the production
- Event and time based conditions
- Open API to integrate into third party applications such as MIS systems, postal sorting, address cleansing, etc



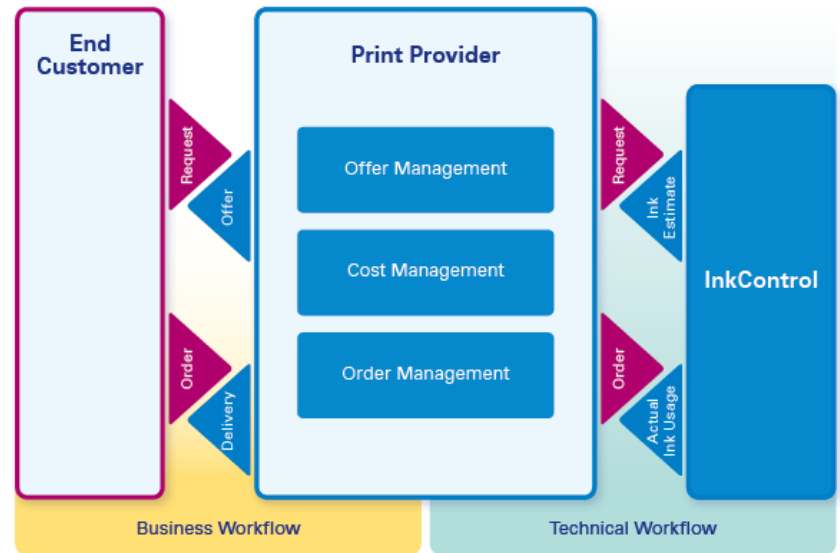
Automated processes are crucial for an efficient and secure production. The **Workflow Module** is a graphical interface to integrate production workflows based on business rules.

# PRISMAproduction V5 – Highlights

- InkControl for improving the quotation process
- Print File Enhancer to enrich PDF and AFP files
- New more intuitive user interface for the Professional Document Composer
- Support of Agfa Apogee environments for seamless integration
- Allows for use of non-latin characters in GUIs and on OS level
- New operating system Suse Linux Enterprise System 11, with 64bit for ultra performance and security
- Numerous enhancements of existing features, e.g. dashboard charts and statistics, floor plan, JDF/JMF, SLA monitoring, etc.

# Ink-Usage Estimation & Monitoring

- Estimation of ink consumption before print run (via TrueProof)
- Reporting of the actual ink usage at print run
- Allows for comparison of pre- and post-print calculations for more accurate ink usage quotations
- Analysis of historical data on ink usages simplifies cost and ink usage overhead analysis
- Helps limiting the risk of underestimating ink costs





# Print File Enhancer

- Enhance and / or modify PDF and AFP files
- The new clear and intuitive user interface enables to create index information, add barcodes or images, insert pages or shift contents
- Allows customers for “last-second” changes on print ready data
  - Tremendous advantage especially in the direct mail market
  - No need to change legacy applications



# Print File Enhancer – Example

### Define Tags

Scan Pages

Page	Text	x	y	Name	Range	Tag Group
1	Bill for USPhone C...	385	46			
2	January 8, 2002	385	81	Date	1 - n	
3	Mr. Pay Up	10...	45	Account ...	1 - n	Group 1
4	Account Holder:	868	45			
5	8234567	10...	70	Account n...	1 - n	Group 1
6	Account Number::	849	69			
7	1 of 3	10...	94			
8	Page:	961	94			
	2	10...	120			
	Units:	963	120			
	Questions?	772	256			
	For Customer Serv...	772	325			
	please contact us ...	772	351			
	Cellular	772	400			
	8-800-667-6840	991	400			
	.....	853	400			
	Fleetnet	772	426			

**Tag Definition** Reset definition X

Name:

Range:

Mailpiece:  Use this tag for mailpiece recognition

Group:

### Preview

**Bill for USPhone Cellular Systems** Account Holder: Mr. Pay Up  
 January 8, 2002 Account Number: 8234567  
 Page: 1 of 3  
 Units: 2

**Summary of Your Account**

**Your previous charges and credits**

Total amount of your last bill ..... 50.30  
 Payments we received ..... 50.30 CR

**Outstanding Balance** ..... 0.00

**Your new charges through Jan. 8 2002**

Monthly service charges ..... 46.50  
 Usage charges ..... 2.50  
 GST 7% (R099452795) ..... 1.57  
 PST 5% ..... 2.68

**Total new charges** ..... 57.25

**The Total Amount Due UPON RECEIPT is \$57.25.**

Thank you for keeping your account current.

**Questions?**

For Customer Service or Billing Inquiries, please contact us at ...

Cellular ..... 8-800-667-6840  
 Fleetnet ..... 8-800-800-5638  
 Wireless Data ..... 8-800-900-0638

For a complete list of our services, please visit us at: [www.cllinetmobility.com](http://www.cllinetmobility.com).

For Internal Billing bill payment, your 12 digit account number is 8234567-82345.

---

Please recycle and return the front cover slip below with your payment.  
 See reverse for payment instructions.

Invoice Date: January 8, 2002  
 Account Number: 0231557  
 Units: 2

0823456700 00005725  
**Due Date: UPON RECEIPT**

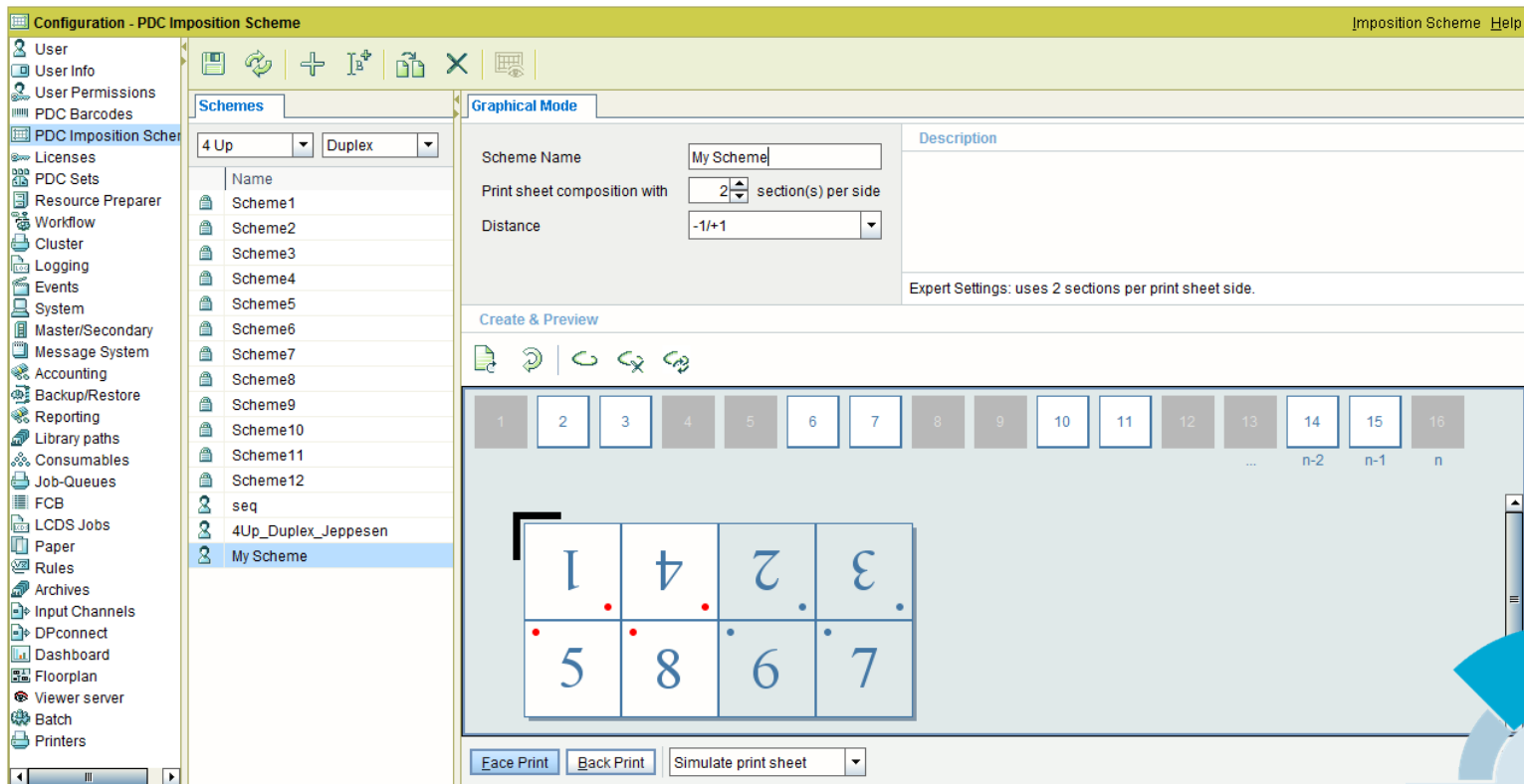
Mr. Pay Up  
 Jan Hosp  
 Billing Address Line 1  
 Billing Address Line 2  
 Billing Address Line 3  
 Billing Address Line 4

Amount you owe \$57.25

Amount you owe \$57.25

# New Professional Document Composer GUI

Much more intuitive imposition



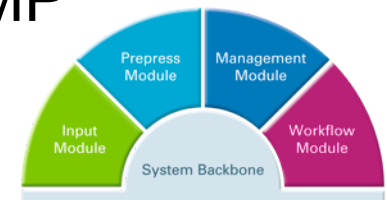
# New JDF/JMF Connectors

- JDF/JMF connector to Agfa Apogee
- JDF/JMF default connector that is customizable
- Enables to easily send jobs to PRISMAproduction from these pre-press systems
- Send back status information (bi-directional integration)
- Configuration of multiple JDF/JMF input channels through configuration file



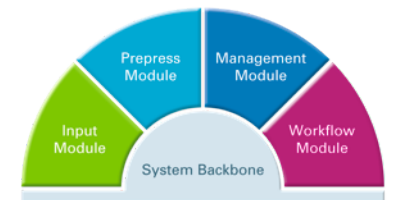
# Additional Enhancements

- Graphical floor plan: now allows for opening the Operator Panel through the floor plan GUI
- PPML: dramatic increase of performance thanks to new conversion process
- Video tutorials for a better and fast introduction of new features – currently available for dashboard and reporting
- SLA monitoring in job list
- Automatic color stations assignments via SNMP



# New Operating System

- New operating system Suse Linux Enterprise System 11, with 64bit support
  - More performance
  - Up-to-date security features
- Allow for use of non-Latin characters in GUIs and on OS level (UTF8 support)
  - An important step to be able to translate the PRISMA production UI in non-Latin languages such as Thai, Indic, Arabic, etc.

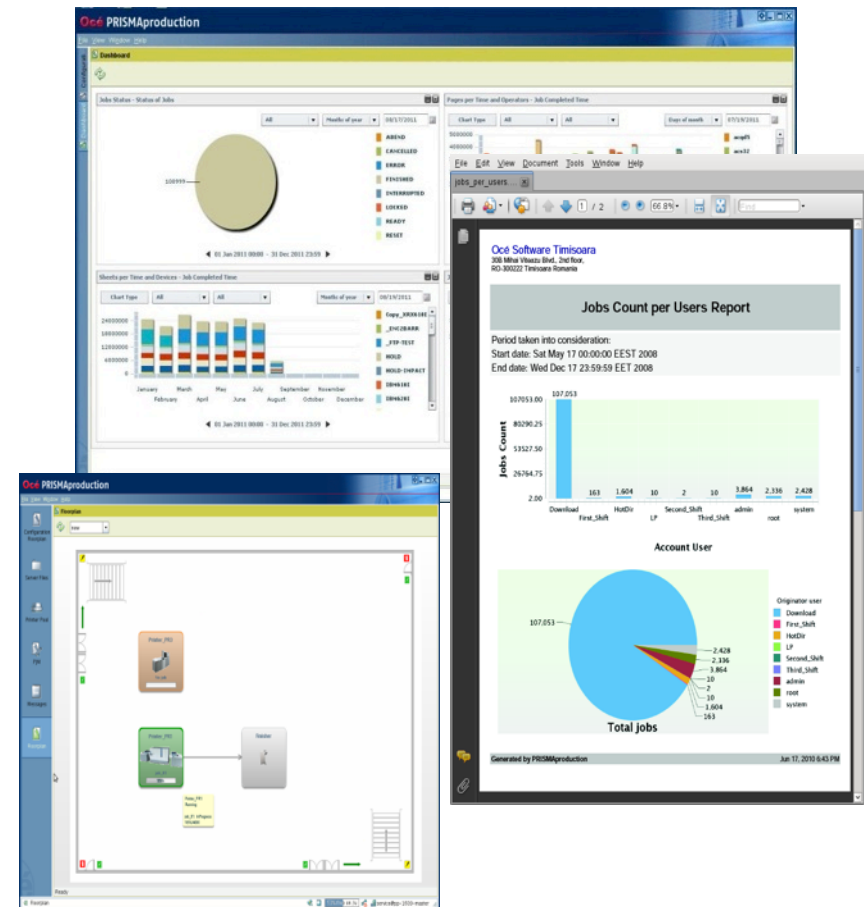


**Examples of how  
Océ PRISMAproduction  
can provide added  
value to your  
operations**



# Get a Complete Picture

- Centralized accounting for the entire system based on one database containing everything that happens to a job
- Get a complete system overview with the integrated dashboard
- Select your statistics and create reports, that can be automatically sent by email
- Clearly defined interface to access the database





# Efficient Short-Run Book Production Workflow

- Rule-based grouping of incoming orders
- Barcode insertion on-the-fly
- Automatic print job routing for cover and book blocks
- Complete reprint management
- Professional document composer



# Pre-printed Form Replacement Made Easy

- Implement white paper printing without changing the original application
- Cut storage costs and footprint
- Reduce logistic efforts
- Increase production productivity
- Reduce paper waste





**Thank you!**